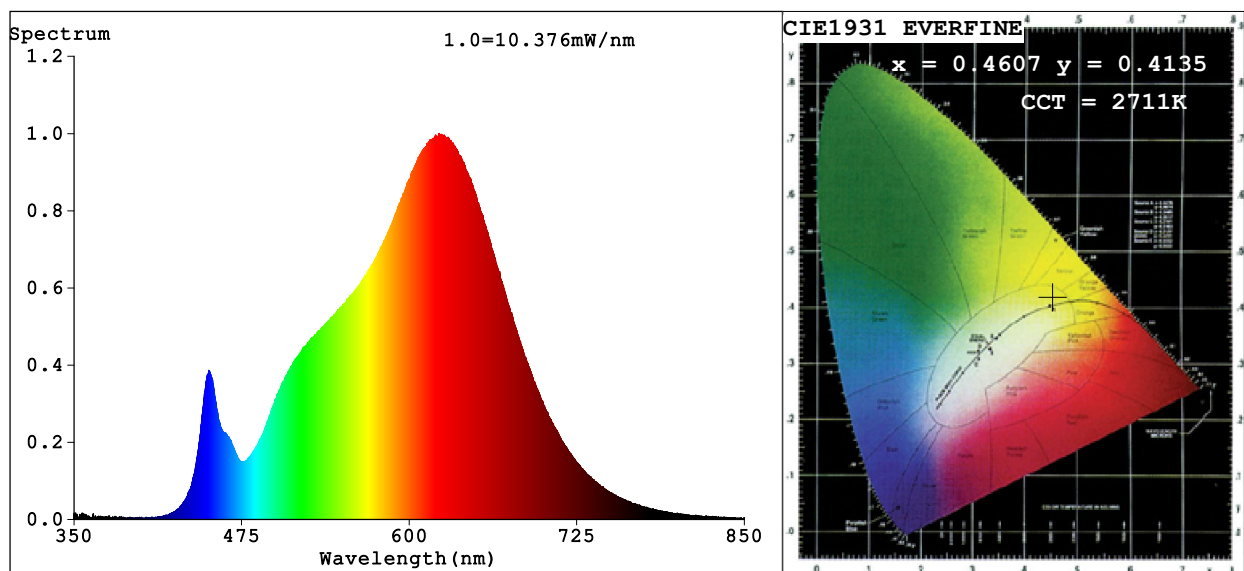


Spectrum Test Report



Color Parameters:

Chromaticity Coordinate: $x=0.4607$ $y=0.4135$ $u'=0.2617$ $v'=0.5286$
 CCT=2711K (Duv=0.0010) Dominant WL:Ld =583.8nm Purity=62.4%
 Ratio:R=26.5% G=71.2% B=2.3%; Peak WL:Lp=622.3nm FWHM=143.0nm
 Render Index:Ra=93.6 CRI=91.0 TM30:Rf=92 Rg=99
 R1 =94 R2 =97 R3 =98 R4 =95 R5 =94 R6 =97 R7 =92
 R8 =82 R9 =60 R10=91 R11=97 R12=84 R13=95 R14=98 R15=89

Photo Parameters:

Flux = 467.3 lm Eff. : 56.77 lm/W Fe = 1.632 W

Electrical parameters:

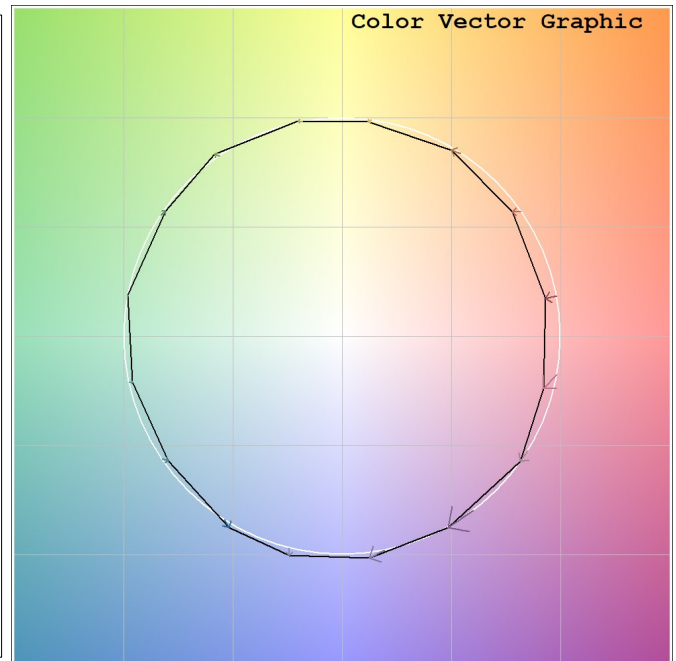
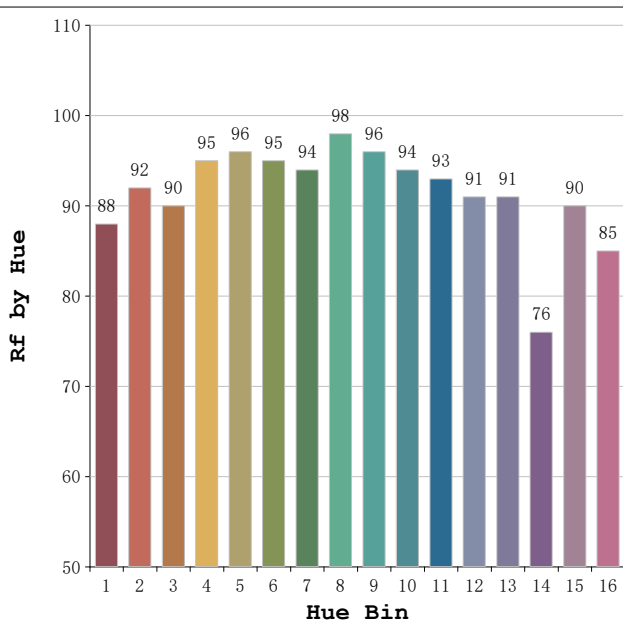
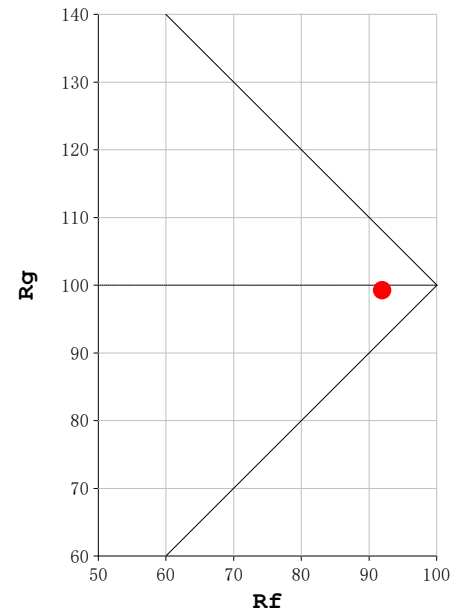
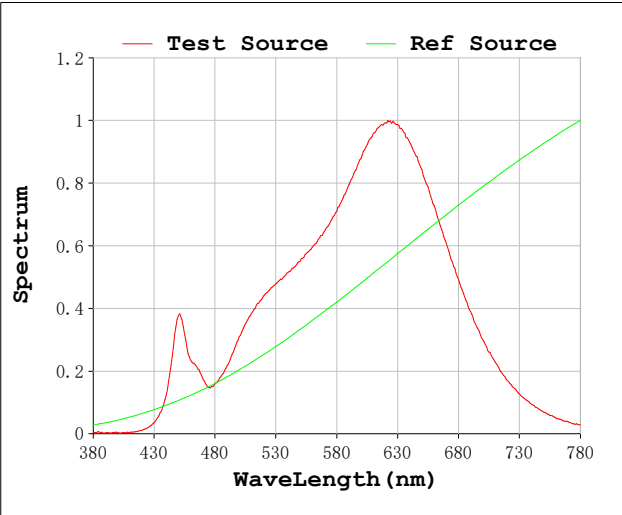
V = 230.12 V I = 0.03803 A P = 8.232 W PF = 0.9407

Status: Integral T = 2000 ms Ip = 35846 (55%)

Model:Focalis Axis 8 W
 Tester:Sergio Carneros
 Temperature:20Deg
 Manufacturer:Luz Negra

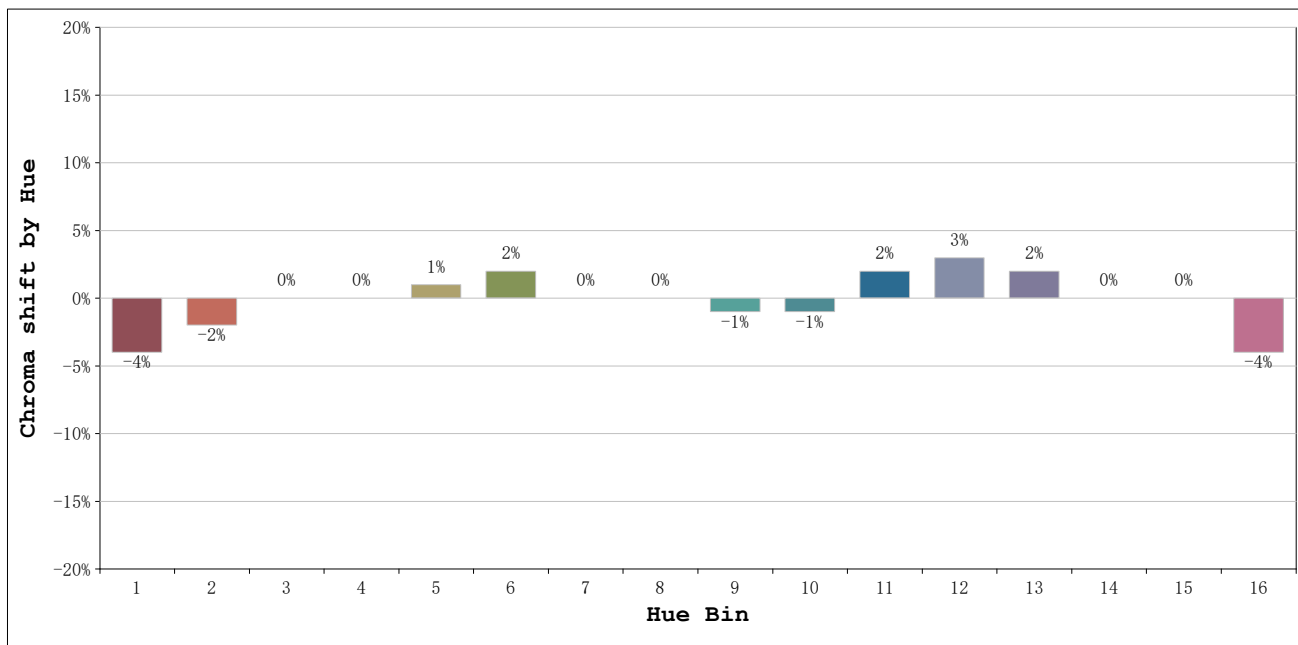
Number:2700K 35°
 Date:2026-03-20 12:29:50
 Humidity:50%
 Remarks:1 unidad ref.blanco

Rf: 92 **CCT: 2711 K** **u': 0.2617**
Rg: 99 **Duv: 0.0010** **v': 0.5286**



Model:Focalis Axis 8 W
 Tester:Sergio Carneros
 Temperature:20Deg
 Manufacturer:Luz Negra

Number:2700K 35°
 Date:2026-03-20 12:29:50
 Humidity:50%
 Remarks:1 unidad ref.blanco



			Graphic shift(%)	
Hue Bin	Hue Angle	Rf	Chroma	Hue
1	0.0° - 22.5°	88	-4	0
2	22.5° - 45.0°	92	-2	2
3	45.0° - 67.5°	90	0	4
4	67.5° - 90.0°	95	0	1
5	90.0° - 112.5°	96	1	2
6	112.5° - 135.0°	95	2	1
7	135.0° - 157.5°	94	0	-2
8	157.5° - 180.0°	98	0	0
9	180.0° - 202.5°	96	-1	0
10	202.5° - 225.0°	94	-1	2
11	225.0° - 247.5°	93	2	4
12	247.5° - 270.0°	91	3	0
13	270.0° - 292.5°	91	2	-7
14	292.5° - 315.0°	76	0	-13
15	315.0° - 337.5°	90	0	-5
16	337.5° - 360.0°	85	-4	-6

Model:Focalis Axis 8 W
 Tester:Sergio Carneros
 Temperature:20Deg
 Manufacturer:Luz Negra

Number:2700K 35°
 Date:2026-03-20 12:29:50
 Humidity:50%
 Remarks:1 unidad ref.blanco